

# VIKING DAILY

Wednesday, November 26, 2025

**Weather:** Snow showers. 32-38° F / -1- 4° C

**Sunrise:** 7:50 AM | **Sunset:** 4:43 PM

## Welcome on board!

We are delighted to welcome you to *Viking Einar*, and look forward to serving you.

We hope to introduce you to some wonderful new discoveries, both ashore and on board, from surprising locations to fascinating cultural activities and events.

This daily newsletter outlines the day's destinations; it also provides a little background on some of the places you will visit, news of our onboard activities, important contact information for the ship, and sailing times.

We are happy to assist with requests. Please contact Guest Services at ext. 0 should you have any questions.

We hope you have a wonderful time!

Sincerely,  
Your Viking Staff

*We are committed to providing you with a peaceful and relaxing cruise experience. To that end, we will only make announcements if absolutely necessary, such as for nautical reasons or in case of delay. You will receive shore excursion tickets that contain all the information you need on activities and departures for tours. The information is also available on your ITV, in the Viking Voyager App and on the printed Viking Daily. Please refer to these channels for the latest information and feel free to contact our Guest Service desk or the Program Director for more information, if needed.*

**Public Health Advisory:** Should you have any allergies, please let your server know and we will be happy to assist.

*For safety reasons, guest access to the Sun Deck is restricted during lock transits and while sailing under low bridges.*

## MORNING

### 11:00 AM–2:00 PM

**Embarkation Buffet:** A choice of salads, sandwiches and hot soup is served in the *Restaurant*.

## AFTERNOON

### 3:00 PM

**Basel Walking Tour:** Join a local guide and discover Basel's inviting cluster of medieval buildings during a walking tour.

## EVENING

### 5:00–6:15 PM

**Drinks & Live Music:** Join fellow guests for a casual get-together in the *Lounge*.

### 6:00 PM

**Welcome Briefing and Safety Instructions:** Join the management team of *Viking Einar* in the *Lounge* for a safety briefing, a brief talk about the ship and what you can look forward to during your time on board.

### 7:00 PM

**Dinner:** Executive Chef Russ and Maître d' Linda invite you to join us for dinner in the *Restaurant* or on the *Aquavit Terrace* which will open 15 minutes after the *Restaurant* hours.

### 8:00 PM

**Cast Off!** *Viking Einar* leaves Basel for Breisach, Germany.

### 9:00 PM

**Evening Entertainment:** We welcome you to the *Lounge* to enjoy an after-dinner drink with music featuring our onboard musician Tiago.

## Viking Einar

### Contacts

Reception: +49 152 225 80 835

Program Director: +49 152 225 82 420

Ship Location: St. Johann 1

### Wi-Fi Network: Viking Einar

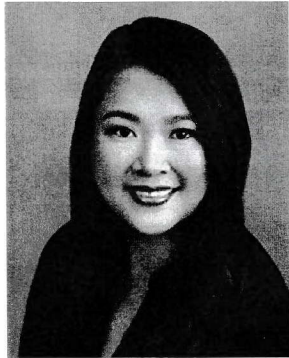
**Wi-Fi:** Connect up to two devices (one per guest) simultaneously to your stateroom's complimentary Wi-Fi. To alternate between devices, use your PIN.

**Please note:** Various factors on the rivers may result in slower online connectivity.



## Godmother Tradition

For more than 4,000 years it has been a maritime tradition for each ship that enters service to have a ceremonial godmother. Godmothers are entrusted with the guidance of the ship to and around her destinations, by blessing the ship for the safety of her crew and passengers throughout her journey. In addition to providing the blessing, godmothers traditionally break champagne against the ship's bow to formally christen her before the inaugural sail.



### Leah Talactac

Leah Talactac-Schueller was born in Manila, Philippines and emigrated to the United States with her parents at age eight. Her family settled in Los Angeles, California, where the diverse peoples, cultures and cuisine sparked a lifelong curiosity for travel. Leah

attended the University of Southern California where she received a BS in accounting and began her career in finance and accounting with Ernst & Young LLP. In 2006, Leah joined Viking as Vice President, Group Controller, and today she is the Executive Vice President, Group Controller and Chief Accounting Officer of the Viking Group. She also holds a seat in the Board of Directors of several Viking Group companies.

Leah co-led the Viking Group's corporate financing efforts, raising funds to launch the ocean project as well as financing the growth of additional Viking Longships. She played an integral role in bringing on valued partners TPG Capital and the Canadian Pension Plan Investment Board. Leah lives in Hermosa Beach, California, with her husband John and their two daughters, Alexis and Nicole. She imparts her love of travel and curiosity about the world to her children with annual family holidays to Europe and beyond.

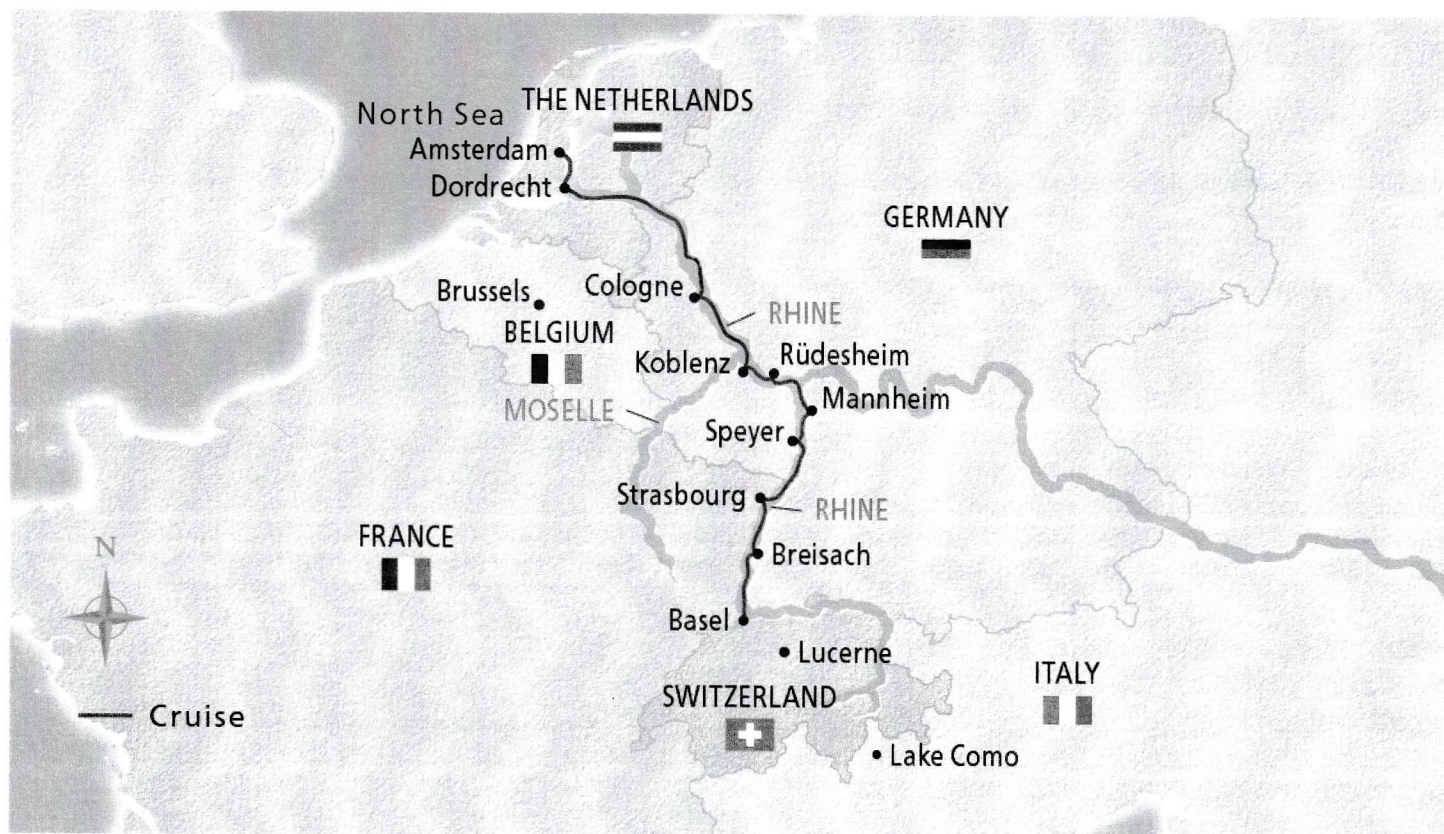
### Einar—Norse Earl of Orkney

After Einar's brother Hallad lost control of the Orkney and Shetland Islands to Danish warlords in the late 9th century, Einar sailed to the archipelago from their native Norway and defeated them. A strong warrior, he later captured Hálfðan, one of the sons of Norwegian king Harald Finehair, who came to the islands to displace him. Einar proclaimed himself Earl of Orkney and the dynasty that he founded ruled the archipelago until 1470.

## Fast facts: The Rhine River

- The Rhine is one of Europe's predominant waterways, offering spectacularly picturesque cruising—particularly where it runs through the Upper Middle Rhine Valley, with its castle-topped hillsides, ancient towns, terraced vineyards and medieval ruins
- In 1932, the German encyclopedia Knauer's Lexikon mistakenly listed the Rhine River's total length as 1,320 km (820 miles) instead of 1,230 km (764 miles). This number found its way into numerous publications and became generally accepted until biologist Bruno Kremer of the University of Cologne discovered the error in 2010.
- The Germans respectfully refer to their country's longest and most important river as "Father Rhine"
- The Rhine begins as a small stream at the foot of the Swiss Alps before passing through Switzerland, Liechtenstein, Austria, France and Germany on its way to join the North Sea in the port city of Rotterdam, The Netherlands
- The Rhine serves as the border between France's Alsace region and Germany's Baden-Württemberg
- The natural border created by the Rhine River was used to denote the northernmost frontier of the Roman Empire
- Many UNESCO World Heritage Sites are located along the Rhine's riverbanks, including Germany's Speyer and Cologne Cathedrals and The Netherlands' windmills at Kinderdijk
- One of the Upper Middle Rhine Valley's most spectacular sights is the 430-foot Lorelei Rock, where the beguiling beauty of the maiden Lorelei was said to sink the ships of distracted sailors as they sailed along the river's jagged shorelines
- The Rhine is an important natural resource, providing a significant amount of the drinking water in southern Germany
- Today, ship travel between Basel and the North Sea is safe and convenient; however, that was not always the case. Castle-dwelling robber barons—who would raise and lower heavy chains spanning the length of the river to ensure that their tolls were duly collected—and burdensome customs stations used to make passage along the Rhine a troublesome affair. In the 14th century, there were 62 customs stations along the Rhine, and many cities had staple rights that enabled them to force every passing ship to unload and offer their cargo for sale to the local residents. These practices were brought to an end in 1831, when the Rhine Shipping Act was signed in Mainz and the Rhine could finally prosper as an international waterway.





*Viking Einar* | Basel, Switzerland to Amsterdam, The Netherlands | November 26, 2025 to December 3, 2025

## Basel, Switzerland

Located where Switzerland, Germany and France meet, Basel reflects a fascinating blend of traditions. The city straddles the Rhine at the river's farthest navigable point, and an alluring cluster of old-town buildings huddles along the hilly riverbank. Around Market Square, guild houses recall Gothic, Renaissance and baroque splendor; the red-sandstone Rathaus, or Town Hall, is the centerpiece. Basel is equally a modern city with an enlightened spirit. More than 40 museums of art and culture lend modern polish to its history-rich streets. And there is no more refined way to sample it all than over cheese fondue or croissants.

## Introducing Your Viking Staff

**Lucian Arhilei**

**CAPTAIN**

Responsible for guest safety and all nautical matters.

**Frank Zimmermann**

**HOTEL MANAGER**

Supervises all onboard hotel operations.

**Emilie Boey**

**PROGRAM DIRECTOR**

Coordinates all excursions and onboard activities.

**Gordana Grgikj**

**HOUSEKEEPER**

Manages the entire housekeeping staff and operations.

**Linda Zambrano**

**MAÎTRE D'**

Responsible for all food and drink operations.

**Russ Ayagan**

**EXECUTIVE CHEF**

Oversees the kitchen and the preparation of all meals.

## Country profile: Switzerland

**SIZE:** 15,937 square miles—twice the size of New Jersey

**POPULATION:** 8.5 million (2023 est., CIA World Factbook)

**LANGUAGE:** Switzerland has three official languages: Swiss German, French, Italian and Romansh

**CURRENCY:** Swiss franc (CHF)

**GEOGRPAHY:** Switzerland is one of the most mountainous countries in Europe, with more than 70 percent of its area covered by the Alps in the central and southern sections, and the Jura in the northwest.

**RELIGION:** 34.4% Roman Catholic, 22.5% Protestant, 5.7% other Christian, 5.4% Islam, 32% none/other/unspecified

**ETHNIC GROUPS:** 69.2% Swiss, 4.2% German, 3.2% Italian, 2.5% Portuguese, 20.9% other

**GOVERNMENT:** Federal republic with two legislative houses: the National Council and the Council of States. The seven-member Federal Council is the executive branch, and the president rotates among its members yearly.

## VIKING VOYAGER APP

Use the app as your personal booking calendar. Download to your smartphone, tablet or laptop from the Apple App Store or Google Play. Log in with your Wi-Fi PIN. Enter your stateroom number and set up a 4-digit PIN.

See Guest Services for details.



*Today in History*

## NOVEMBER 26

**1789**

The 1st national Thanksgiving Day in the US is proclaimed by President George Washington.

**1862**

Oxford mathematician Charles Lutwidge Dodgson (aka Lewis Carroll) sends *Alice's Adventures Under Ground* to 10-year-old Alice Liddell, his inspiration for the story.

**1922**

Howard Carter and Lord Carnarvon become the 1st people to enter the tomb of King Tutankhamen since it was sealed in 1323 BC.

**BIRTHDAY: 1922**

Charles M. Schulz

*American cartoonist; creator of Peanuts (d. 2000)*



## NAUTICAL TERM

*— of the day —*

### SLUSH FUND

A slushy slurry of fat was obtained by boiling or scraping the empty salted meat storage barrels. This stuff, called "slush," was often sold ashore by the ship's cook for the benefit of himself or the crew. The money so derived became known as a "slush fund."

